



THE STANDARD IN PV MOUNTING STRUCTURES™



# U-LA™

**UniRac's Large Array**  
3 kilowatts to a megawatt plus

We design U-LAs for a wider range of site and climactic challenges than any other PV structure on the market. It's a cost-effective mounting solution that has grown with the vision of the PV industry. Today U-LA customers routinely reap hundreds of kilowatts per installation.



Commercial roof



Ground

[www.unirac.com](http://www.unirac.com)

Start at our web site . . .

[www.unirac.com](http://www.unirac.com)

Our on-line questionnaire guides you through data collection so that we can design the optimum solution for you.

We'll send you:

- A bill of materials for all required U-LA components.
- Specifications for readily available materials, such as pipe and concrete.
- A price quote and delivery lead time.



### Rely on the Best Resource: People

As U-LAs grow larger and more popular, UniRac is devoting more resources to design. We're added designers and draftsmen to create and revise plans. We're continuing our program of on-site visits to major installations to learn from the people that count the most: our customers.

### Also from [www.unirac.com](http://www.unirac.com)

- Installation instructions
- U-LA photo gallery
- UniRac On Site (project descriptions)

- *Lightweight aluminum components keep shipping costs low, a major consideration for this installation in the United Kingdom. Because assembly took place atop a high-rise, we also designed to accommodate a maximum allowable component length.*



## Megawatts of experience

### Save Through Installation Ease

From conception, UniRac Large Arrays are cost effective. They offer a better alternative than designing from scratch. Lightweight U-LA joints ship economically and combine easily with installer-supplied Schedule 40 or 80 steel pipe, available virtually anywhere. SolarMount® standard and HD (heavy duty) rails make U-LA all the more installer friendly. Never waste time sliding hardware down long rail slots. Choose the mounting method best suited to your assembly preferences. Bring your installation to production painlessly.

### Use That Sunny Roof

U-LA custom designs open flat commercial roofs to large PV arrays on a scale that off-the-shelf products cannot. We begin with the structural properties of your building. Design software ensures a minimum number of attachments without overstressing any roof member. We'll accommodate various roofing materials and examine shading. Designs will optimize tilt angle and can provide clearance to assembly your array over other rooftop equipment. When you need to resurface your roof, you won't have to disassemble your solar array to do it.



Three module mounting systems accommodate your preferences in module orientation and assembly sequence.



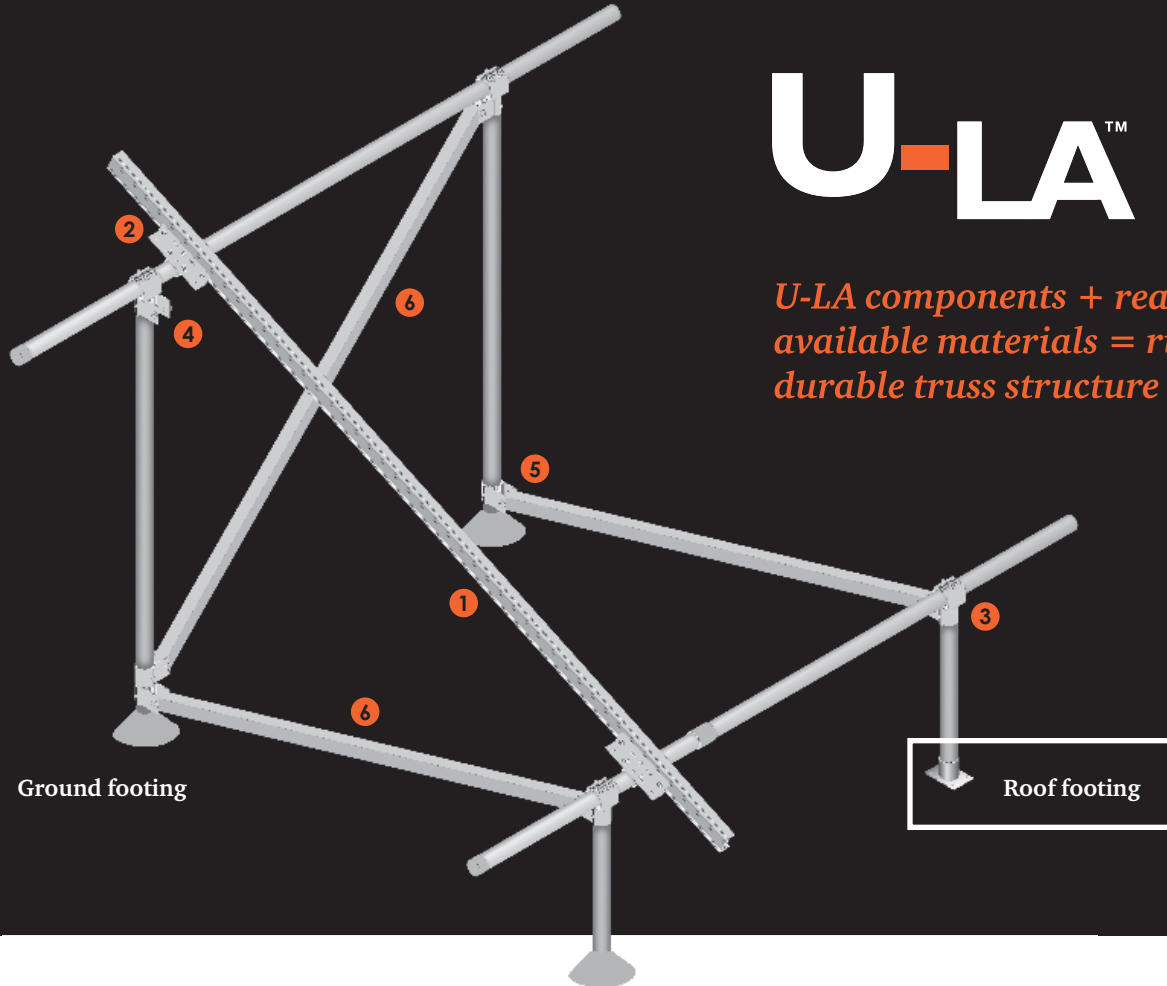
Top mounting clamps



Shared rail brackets

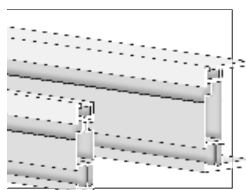


Bottom mounting clips

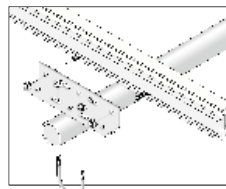


**U-LA™**

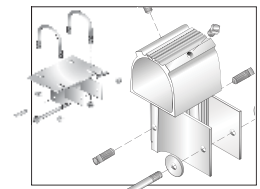
*U-LA components + readily available materials = rigid, durable truss structure*



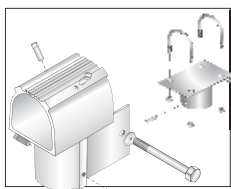
**1** SolarMount rail—Standard or HD (heavy duty) options



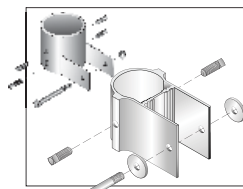
**2** Rail mounting brackets



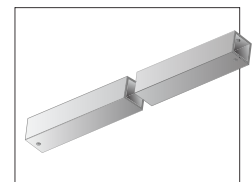
**3** Front leg cap—Aluminum (right) or steel options



**4** Rear leg cap—Aluminum (left) or steel options



**5** Sliders—Aluminum (right) or steel options



**6** Cross brace

- U-LA's original steel components remain available for installations using 2-, 2½-, or 3-inch Schedule 40 or 80 steel pipe. Use them where extreme wind or seismic conditions take precedent.



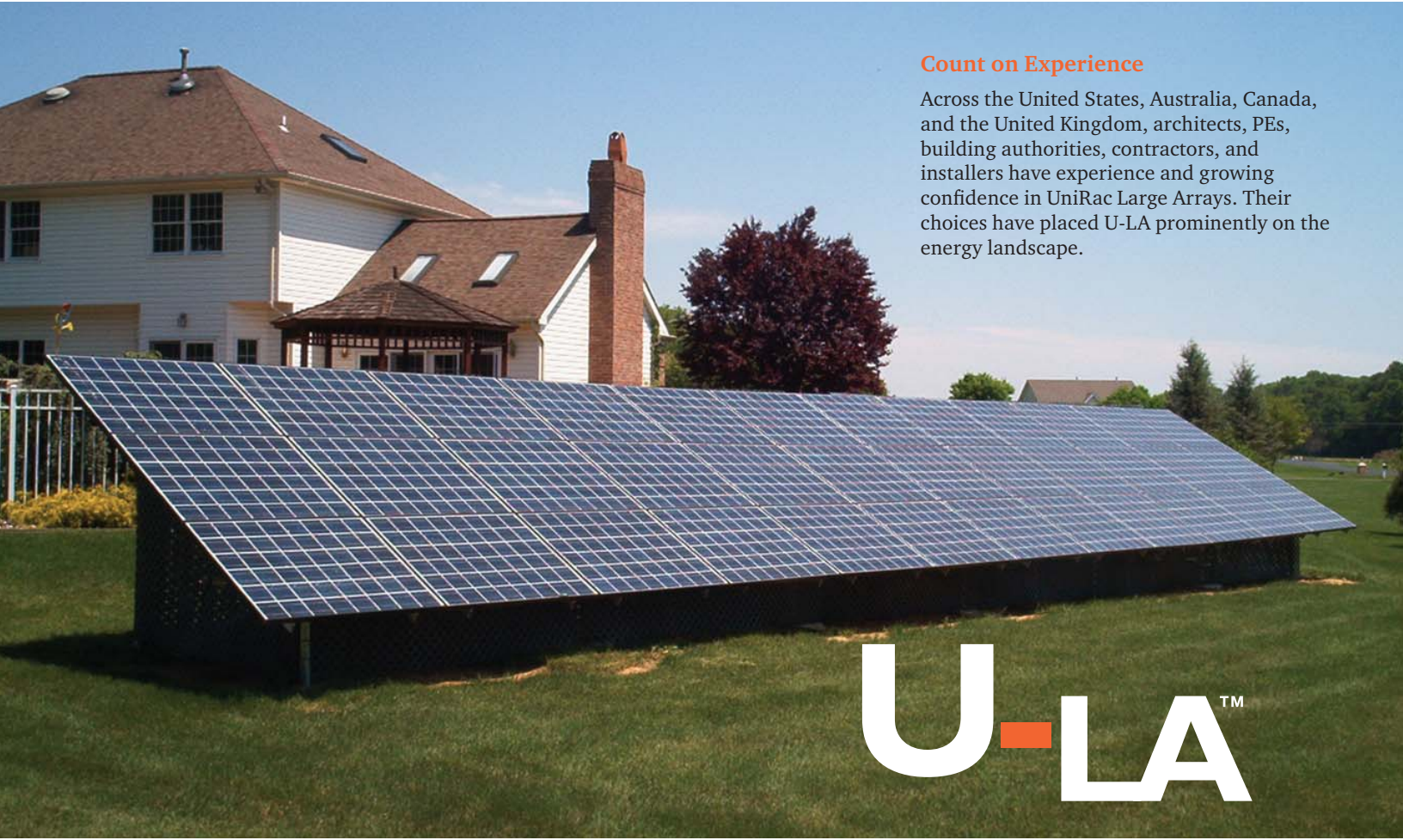
### Stand Up to Mother Nature

We all know she'll test us: maybe next week, maybe one night 15 years from now. Some challenges are routine: uneven, rocky, sloping terrain or heavy coastal winds that blow year in and year out. Some are extraordinary: Zone 4 seismic events or extreme wind or snow loads may occur only once or twice in the decades of an installation's lifetime. We design U-LAs for those challenges. Every U-LA is diagonally braced for the most severe events. In 30 years, you'll find it where you installed it.

### Satisfy the Building Inspector

Larger and larger installations invite closer scrutiny from building departments, especially in urban rooftop venues. U-LA has been permitted in hundreds of projects from New York City to New South Wales. Since inspectors apply local practices as well as broader codes, we're ready with design documentation and reports from our rigorous program of destructive testing. A growing number of building departments have confidence in U-LA.





**Count on Experience**

Across the United States, Australia, Canada, and the United Kingdom, architects, PEs, building authorities, contractors, and installers have experience and growing confidence in UniRac Large Arrays. Their choices have placed U-LA prominently on the energy landscape.



**Component Specifications**

---

*6105-T5 aluminum extrusion*

- SolarMount® HD or standard rails
- Brackets and cross braces
- Pipe caps and truss sliders (aluminum option)
- Mounting clips and clamps

*Severe Condition 4 (very severe) zinc-plated welded steel*

- Pipe caps and truss sliders (steel option)

*304 stainless steel*

- Fasteners

*ASTM A53 Schedule 40 galvanized steel*

- Installer-supplied legs and cross pipes (2-, 2½-, and 3-inch options)

**Warranty**

---

U-LA is covered by a 10-year limited product warranty and a 5-year limited finish warranty. For complete warranties, download any U-LA installation manual from our web site.

